

## Better Stands Onsite Report - The Battery Show Europe 2025

7-C05 / Seika Sangyo GmbH

Complete

### Stand Information

**Hall Number** 7

**Stand Number** 7-C05

**Exhibitor Name** Seika Sangyo GmbH

**Square Meterage** 24

**Exhibitor Appointed Contractor** MDS Messebau und Service GmbH

**Better Stands Representative - Email** ctietze@mdsmessebau.de

### Better Stands Onsite Report

**Stand structure and walls**  
(e.g. Structure or framework of the stand, walls, panels for meeting rooms, backdrop.)

Y

**Will they be re-used after this event?**

Be-matrix framing will be reused



Photo 1

**Main Material of Stand Structure and Walls**

Aluminium

**Platform / Raised Flooring**  
(Structure of flooring excluding surface covering, e.g. carpet)

N/A

**Will it be re-used after this event?**

**Furniture and Equipment**  
(Counters, chairs, tables, sofa, coffee table, cabinet, flyer stand, LED walls, TV, AV equipment etc.)

Y

Will they be re-used after this event?



Photo 2

**Lighting**  
(e.g. All kinds of lightings in the stand and showcases)

Will they be re-used after this event?

LED lighting will be reused

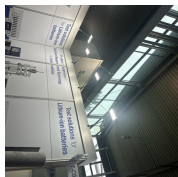


Photo 3

**Fascia and/or Overhead Signage**  
(Overhead signage or branding, Fascia, company logo on top of the stand structure)

Will they be re-used after this event?

**Rigged Structure**  
(Any rigged structure including lighting gantries or other structural elements.)

Will they be re-used after this event?

**Ceiling**  
(Any form of ceiling e.g. fabric ceiling, solid ceiling for lights or stand support)

Will it be re-used after this event?

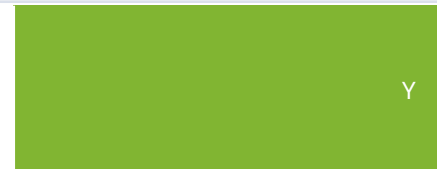
**Display Facilities**  
(Built-in or Detachable product display cabinets, Lightboxes etc)

Will they be re-used after this event?

Display facilities were packaged securely, will be reused.



Photo 4



**Flooring**  
(e.g. carpeting, floor tiling, HDF coverings, Underlay)

**Will they be re-used/recycled after this event?**

Carpet, disposed of.

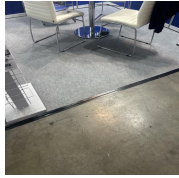


Photo 5



Photo 6

**Graphics & Decorative Items**  
(e.g. Stand graphics that are wall mounted or floor standing not overhead and any other decorative items such as plants & flowers, models or ornaments)

**Will they be re-used/recycled after this event?**

Fabric graphics attached to aluminium framing. Will be reused.



Photo 7

Y - Reused

Media summary



Photo 1



Photo 2



Photo 3



Photo 4



Photo 5



Photo 6



Photo 7